

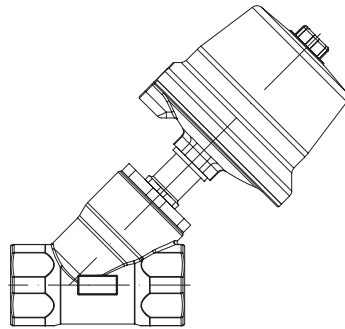
Pneumatic process valve, Y-pattern with pneumatic actuator of stainless steel
DN 15 - 50

ARI-STEVI® AS 350

Pneumatic actuator

- with screwed sockets

- Piston actuator
- Required air supply pressure, max. 10 bar
- Operating pressure, max. 16 bar



Page 2

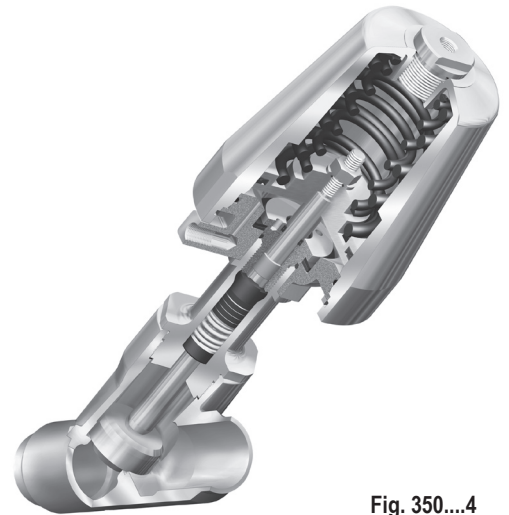


Fig. 350....4

ARI-STEVI® AS 350

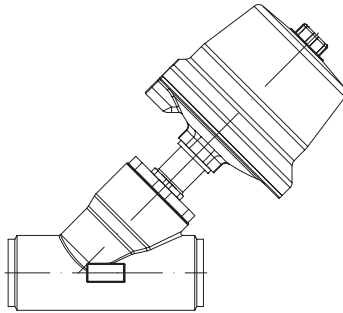
Pneumatic actuator

- with butt weld ends

Pipe connection acc. to ISO 4200

Pipe connection acc. to DIN 11850

- Piston actuator
- Required air supply pressure, max. 10 bar
- Operating pressure, max. 16 bar



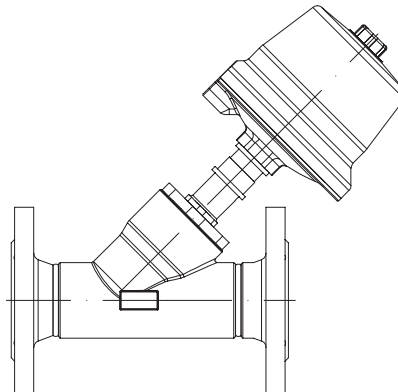
Page 4

ARI-STEVI® AS 350

Pneumatic actuator

- with flanges

- Piston actuator
- Required air supply pressure, max. 10 bar
- Operating pressure, max. 16 bar



Page 6

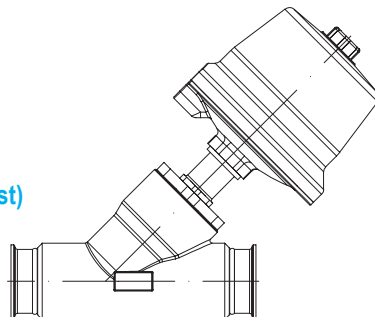
ARI-STEVI® AS 350

Pneumatic actuator

- for clamp connection

acc. to DIN 32676 (BS4825-3 on request)

- Piston actuator
- Required air supply pressure, max. 10 bar
- Operating pressure, max. 16 bar

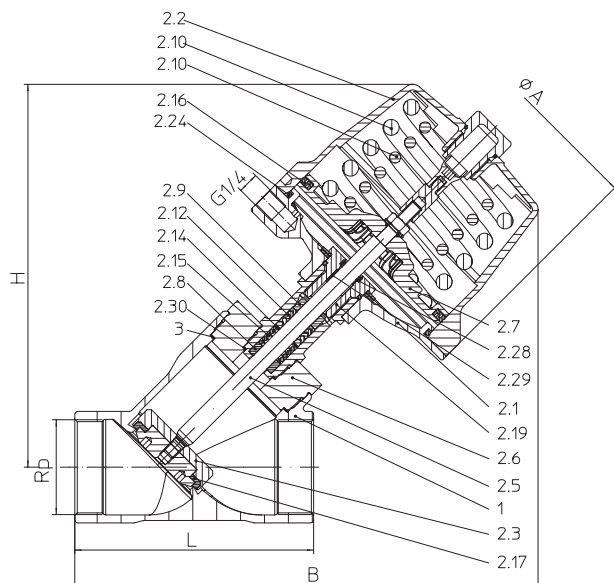


Page 8

Features:

- Compact design
- Roller burnished stem
- Spring loaded PTFE-V ring packing unit
- Optical position indicator
- Mounting in any position, preferably actuator upwards
- Viscosity to 600 mm²/s

Pneumatic process valve, Y-pattern with screwed sockets and pneumatic actuator



| Figure | Nominal pressure | Material | Nominal diameter |
|--|------------------|----------|------------------|
| 52.350...2 | PN16 | 1.4408 | DN15-50 |
| Stem sealing | | | |
| <ul style="list-style-type: none"> • PTFE-V-ring unit -10°C to 180°C (optional with hood extension to 184°C) | | | |
| Plug design | | | |
| <ul style="list-style-type: none"> • Isolation plug with PTFE-soft sealing | | | |
| Shut off class (Shut off classes) | | | |
| <ul style="list-style-type: none"> • Metal / PTFE - Leakage class A acc. to DIN EN 12266-1 • Metal / FPM - Leakage class A acc. to DIN EN 12266-1 (optional) | | | |
| Actuator material | | | |
| <ul style="list-style-type: none"> • 1.4408 (Max. permissible ambient temperature +60°C) | | | |

Selection of possible applications

Industrial installations, processing technology, plant manufacturing, etc.
(other applications on request)

Selection of possible flow media

Cooling water, Warm water, Hot water, Steam, Oil, Air, Neutral gases, Alkalis, Alcohol, etc.
(other flow media on request)

Fig. 350 Spring closes (NC)

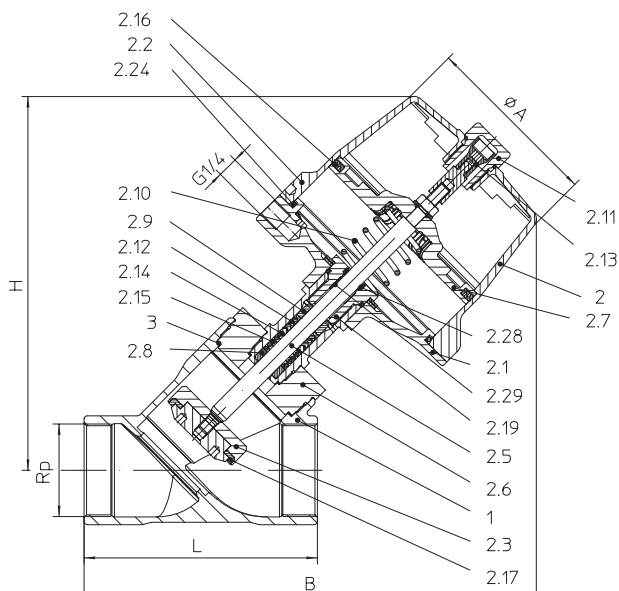


Fig. 350 Spring opens on air failure (optional) (NO)

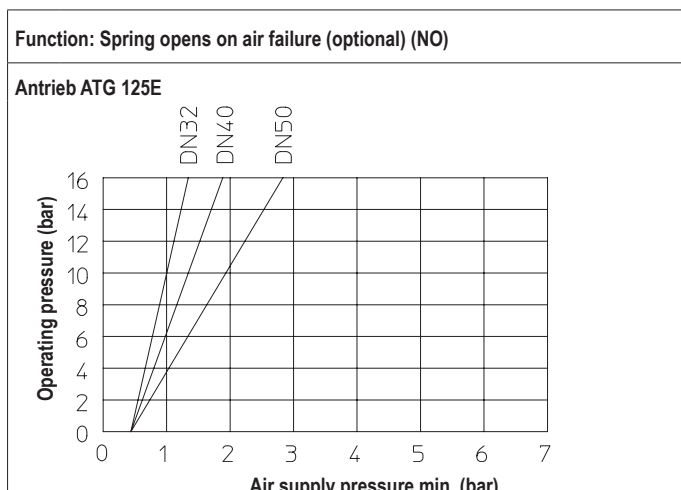
Dimensions and weights

| DN | 15 | | 20 | | 25 | | 32 | | 40 | | 50 | |
|----------|----------------|---------|---------|---------|----------|----------|----------|----------------|---------|----------|----------------|--|
| | Rp 1/2 | Rp 3/4 | Rp 1 | | Rp 1 1/4 | | Rp 1 1/2 | | Rp 2 | | | |
| Actuator | ATG 50E | ATG 50E | ATG 50E | ATG 80E | ATG 80E | ATG 125E | ATG 80E | ATG 125E | ATG 80E | ATG 125E | | |
| L | in preparation | | | | | | 120 | in preparation | | 130 | in preparation | |
| H | in preparation | | | | | | 223 | in preparation | | 230 | in preparation | |
| B | in preparation | | | | | | 267 | in preparation | | 271 | in preparation | |
| ØA | in preparation | | | | | | 152 | in preparation | | 152 | in preparation | |
| Rp (BSP) | in preparation | | | | | | 1 1/4 | in preparation | | 1 1/2 | in preparation | |
| Weight | in preparation | | | | | | 6,8 | in preparation | | 7,1 | in preparation | |

Face-to-face dimension series M4 acc. to DIN 3202 T4

Air supply pressure (flow direction under the plug)

| Function: Spring closes on air failure (NC) | | | | | | | | | | | | | | | | | | | | |
|---|--------|----------------|----|----|----|----|----|---------|---|----|----|---|----|----------------|----------------|----------|----|----------------|----------|----|
| DN | | 15 | | | 20 | | | 25 | | | 32 | | | 40 | | | 50 | | | |
| Actuator | | ATG 50E | | | | | | ATG 80E | | | | | | ATG 125E | ATG 80E | ATG 125E | | ATG 80E | ATG 125E | |
| Operating pressure max. | (bar) | 6 | 10 | 16 | 6 | 10 | 16 | 6 | 6 | 10 | 16 | 6 | 10 | 16 | 6 | 10 | 16 | 4 | 6 | 10 |
| Kvs-value | (m³/h) | in preparation | | | | | | | | | | | | 25,8 | in preparation | 38,2 | | in preparation | 58,5 | |
| Travel | (mm) | | | | | | | | | | | | | 25 | | 25 | | | 25 | |
| Air supply pressure min. | (bar) | | | | | | | | | | | | | in preparation | | | | | | |

Air supply pressure diagram (flow direction under the plug)

Parts

| Pos. | Description | Fig. 52.350....2 |
|------|------------------|---------------------------|
| 1 | Body | GX5CrNiMo19-11-2, 1.4408 |
| 2 | Bonnet, cpl. * | |
| 2.1 | Actuator housing | GX5CrNiMo19-11-2, 1.4408 |
| 2.2 | Actuator cover | GX5CrNiMo19-11-2, 1.4408 |
| 2.3 | Plug | X6CrNiMoTi17-12-2, 1.4571 |
| 2.5 | Stem | X2CrNiMo17-12-2, 1.4404 |
| 2.6 | Hood | GX5CrNiMo19-11-2, 1.4408 |
| 2.7 | Piston | GX5CrNiMo19-11-2, 1.4408 |
| 2.8 | Bushing | PTFE |
| 2.9 | Guide bushing | PA66 GF |
| 2.10 | Spring | SH |
| 2.11 | Sight glass | PA transparent |
| 2.12 | V-ring unit | PTFE |
| 2.13 | Indication | PA66 |
| 2.14 | Washer | 1.4301 |
| 2.15 | Spring | X10CrNi18-8, 1.4310 |
| 2.16 | Sealing ring | NBR |
| 2.17 | Sealing ring | PTFE |
| 2.19 | Screw joint | X6CrNiMoTi17-12-2, 1.4571 |
| 2.24 | O-ring | NBR |
| 2.28 | Rod seal | FPM |
| 2.29 | Cylinder bushing | Stainless steel / PTFE |
| 3 | Gasket * | PTFE / Graphite |

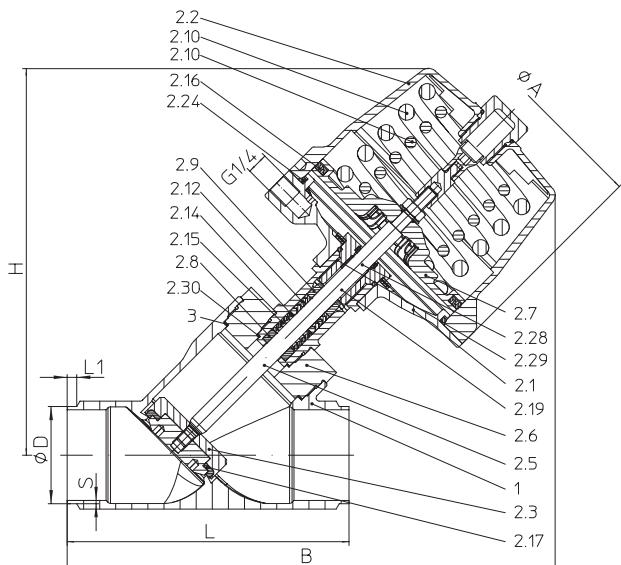
* Spare parts (Pos. 2.1 - 2.29 werden als Baugruppe geliefert)

Information / restriction of technical rules need to be observed!

A production allowance acc. to TRB 801 No. 45 exists (CC491K ist acc. to TRB 801 Nr. 45 nicht zugelassen.)

The engineer, designing a system or a plant, is responsible for the selection of the correct valve.

Pneumatic process valve, Y-pattern with butt weld ends and pneumatic actuator



| Figure | Nominal pressure | Material | Nominal diameter |
|--|------------------|----------|------------------|
| 52.350...4 | PN16 | 1.4408 | DN15-50 |
| Stem sealing | | | |
| <ul style="list-style-type: none"> • PTFE-V-ring unit -10°C to 180°C (optional with hood extension to 184°C) | | | |
| Plug design | | | |
| <ul style="list-style-type: none"> • Isolation plug with PTFE-soft sealing | | | |
| Shut off class (Shut off classes) | | | |
| <ul style="list-style-type: none"> • Metal / PTFE - Leakage class A acc. to DIN EN 12266-1 • Metal / FPM - Leakage class A acc. to DIN EN 12266-1 (optional) | | | |
| Actuator material | | | |
| <ul style="list-style-type: none"> • 1.4408 (Max. permissible ambient temperature +60°C) | | | |

Selection of possible applications

Industrial installations, processing technology, plant manufacturing, etc.
(other applications on request)

Selection of possible flow media

Cooling water, Warm water, Hot water, Steam, Oil, Air, Neutral gases, Alkalis, Alcohol, etc.
(other flow media on request)

Fig. 350 Spring closes (NC)

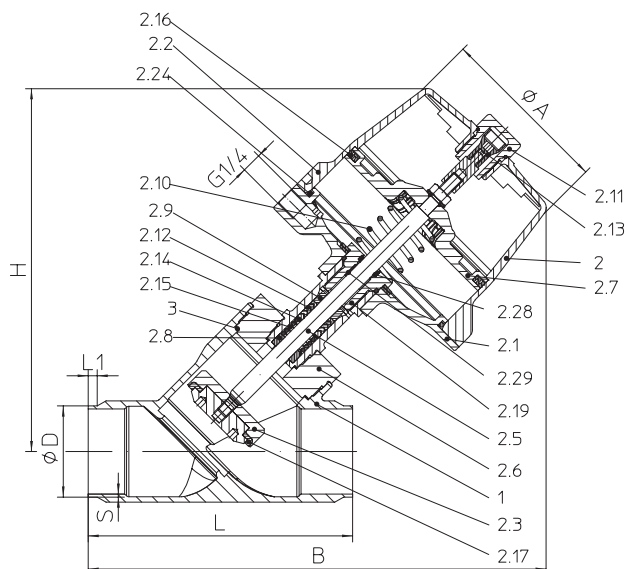


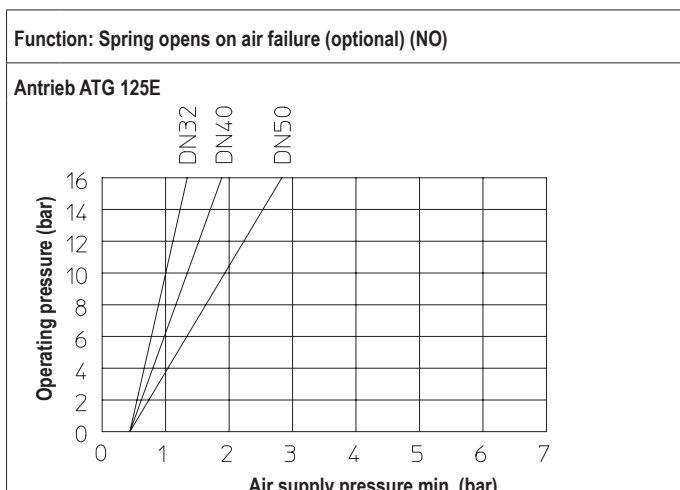
Fig. 350 Spring opens on air failure (optional) (NO)

Dimensions and weights

| DN | 15 | | 20 | | 25 | | 32 | | 40 | | 50 | |
|-----------------------------------|---------|---------|---------|---------|---------|----------|---------|----------|---------|----------|---------|----------|
| Actuator | ATG 50E | ATG 50E | ATG 50E | ATG 80E | ATG 80E | ATG 125E | ATG 80E | ATG 125E | ATG 80E | ATG 125E | ATG 80E | ATG 125E |
| H | (mm) | | | | | | 223 | | | | 240 | |
| B | (mm) | | | | | | 280 | | | | 308 | |
| ØA | (mm) | | | | | | 152 | | | | 152 | |
| Pipe connection acc. to ISO 4200 | L | (mm) | | | | | 145 | | | | 175 | |
| | L1 | (mm) | | | | | 6 | | | | 6 | |
| | ØD | (mm) | | | | | 42,4 | | | | 60,3 | |
| | S | (mm) | | | | | 2 | | | | 2 | |
| Pipe connection acc. to DIN 11850 | L | (mm) | | | | | 130 | | | | 160 | |
| | L1 | (mm) | | | | | 6 | | | | 6 | |
| | ØD | (mm) | | | | | 35 | | | | 53 | |
| | S | (mm) | | | | | 1,5 | | | | 1,5 | |
| Weight | (kg) | | | | | | 6,8 | | | | 8,1 | |

Air supply pressure (flow direction under the plug)

| Function: Spring closes on air failure (NC) | | | | | | | | | | | | | | | | | | | | |
|---|--------|----------------|----|----|----|----|----|---------|---|----|----|---|----|----------------|----------------|----------|----|----------------|----------|----|
| DN | | 15 | | | 20 | | | 25 | | | 32 | | | 40 | | | 50 | | | |
| Actuator | | ATG 50E | | | | | | ATG 80E | | | | | | ATG 125E | ATG 80E | ATG 125E | | ATG 80E | ATG 125E | |
| Operating pressure max. | (bar) | 6 | 10 | 16 | 6 | 10 | 16 | 6 | 6 | 10 | 16 | 6 | 10 | 16 | 6 | 10 | 16 | 4 | 6 | 10 |
| Kvs-value | (m³/h) | in preparation | | | | | | | | | | | | 25,8 | in preparation | 38,2 | | in preparation | 58,5 | |
| Travel | (mm) | | | | | | | | | | | | | 25 | | 25 | | | 25 | |
| Air supply pressure min. | (bar) | | | | | | | | | | | | | in preparation | | | | | | |

Air supply pressure diagram (flow direction under the plug)

Parts

| Pos. | Description | Fig. 52.350...4 |
|------|------------------|---------------------------|
| 1 | Body | GX5CrNiMo19-11-2, 1.4408 |
| 2 | Bonnet, cpl. * | |
| 2.1 | Actuator housing | GX5CrNiMo19-11-2, 1.4408 |
| 2.2 | Actuator cover | GX5CrNiMo19-11-2, 1.4408 |
| 2.3 | Plug | X6CrNiMoTi17-12-2, 1.4571 |
| 2.5 | Stem | X2CrNiMo17-12-2, 1.4404 |
| 2.6 | Hood | GX5CrNiMo19-11-2, 1.4408 |
| 2.7 | Piston | GX5CrNiMo19-11-2, 1.4408 |
| 2.8 | Bushing | PTFE |
| 2.9 | Guide bushing | PA66 GF |
| 2.10 | Spring | SH |
| 2.11 | Sight glass | PA transparent |
| 2.12 | V-ring unit | PTFE |
| 2.13 | Indication | PA66 |
| 2.14 | Washer | 1.4301 |
| 2.15 | Spring | X10CrNi18-8, 1.4310 |
| 2.16 | Sealing ring | NBR |
| 2.17 | Sealing ring | PTFE |
| 2.19 | Screw joint | X6CrNiMoTi17-12-2, 1.4571 |
| 2.24 | O-ring | NBR |
| 2.28 | Rod seal | FPM |
| 2.29 | Cylinder bushing | Stainless steel / PTFE |
| 3 | Gasket * | PTFE / Graphite |

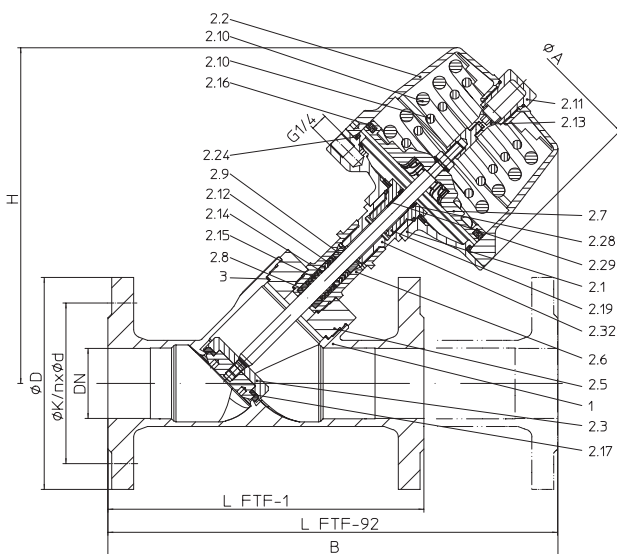
* Spare parts (Pos. 2.1 - 2.29 werden als Baugruppe geliefert)

Information / restriction of technical rules need to be observed!

A production allowance acc. to TRB 801 No. 45 exists

The engineer, designing a system or a plant, is responsible for the selection of the correct valve.

Pneumatic process valve, Y-pattern with flanges and pneumatic actuator



| Figure | Nominal pressure | Material | Nominal diameter |
|---|------------------|----------|------------------|
| 52.350...1 | PN16 | 1.4408 | DN15-50 |
| Stem sealing | | | |
| • PTFE-V-ring unit -10°C to 184°C | | | |
| Plug design | | | |
| • Isolation plug with PTFE-soft sealing | | | |
| Shut off class (Shut off classes) | | | |
| • Metal / PTFE - Leakage class A acc. to DIN EN 12266-1 | | | |
| • Metal / FPM - Leakage class A acc. to DIN EN 12266-1 (optional) | | | |
| Actuator material | | | |
| • 1.4408 (Max. permissible ambient temperature +60°C) | | | |

Selection of possible applications

Industrial installations, processing technology, plant manufacturing, etc.
(other applications on request)

Selection of possible flow media

Cooling water, Warm water, Hot water, Steam, Oil, Air, Neutral gases, Alkalis, Alcohol, etc.
(other flow media on request)

Fig. 350 Spring closes (NC)

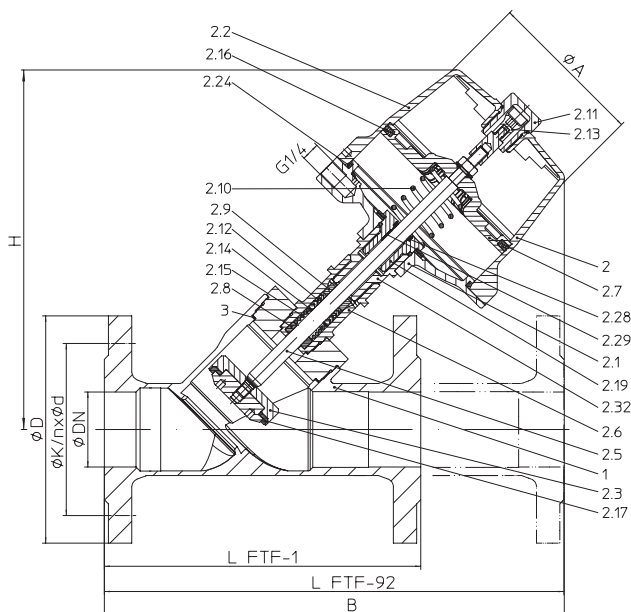


Fig. 350 Spring opens on air failure (optional) (NO)

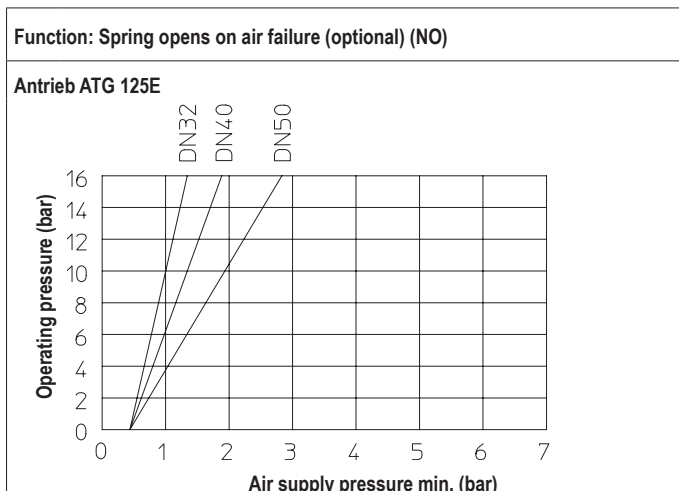
Dimensions and weights

| DN | | 15 | 20 | 25 | | 32 | | 40 | | 50 | |
|-----------------|----------|----------------|---------|---------|---------|---------|----------|---------|----------------|---------|----------|
| Actuator | | ATG 50E | ATG 50E | ATG 50E | ATG 80E | ATG 80E | ATG 125E | ATG 80E | ATG 125E | ATG 80E | ATG 125E |
| L (FTF-1) | (mm) | in preparation | | | | | | 180 | in preparation | | 230 |
| L (FTF-92) | (mm) | | | | | | | 300 | | | 350 |
| H | (mm) | | | | | | | 244 | | | 261 |
| B | (mm) | | | | | | | 302 | | | 335 |
| ØA | (mm) | | | | | | | 152 | | | 152 |
| ØD | (mm) | | | | | | | 140 | | | 165 |
| ØK | (mm) | | | | | | | 100 | | | 125 |
| n x Ød | (n x mm) | | | | | | | 4 x 18 | | | 4 x 18 |
| Weight (FTF-1) | (kg) | | | | | | | 10,4 | | | 13,8 |
| Weight (FTF-92) | (kg) | | | | | | | 11 | | | 14,8 |

Face-to-face dimension FTF series 1 acc. to DIN EN 558 or Face-to-face dimension FTF series 92 acc. to DIN EN 558

Air supply pressure (flow direction under the plug)

| Function: Spring closes on air failure (NC) | | | | | | | | | | | | | | | | | | | | |
|---|--------|----------------|----|----|----|----|----|---------|---|----|----|---|----|----------------|----------------|----------|----|----------------|----------|----|
| DN | | 15 | | | 20 | | | 25 | | | 32 | | | 40 | | | 50 | | | |
| Actuator | | ATG 50E | | | | | | ATG 80E | | | | | | ATG 125E | ATG 80E | ATG 125E | | ATG 80E | ATG 125E | |
| Operating pressure max. | (bar) | 6 | 10 | 16 | 6 | 10 | 16 | 6 | 6 | 10 | 16 | 6 | 10 | 16 | 6 | 10 | 16 | 4 | 6 | 10 |
| Kvs-value | (m³/h) | in preparation | | | | | | | | | | | | 25,8 | in preparation | 38,2 | | in preparation | 58,5 | |
| Travel | (mm) | | | | | | | | | | | | | 25 | | 25 | | | 25 | |
| Air supply pressure min. | (bar) | | | | | | | | | | | | | in preparation | | | | | | |

Air supply pressure diagram (flow direction under the plug)

Parts

| Pos. | Description | Fig. 52.350....1 |
|------|------------------|---------------------------|
| 1 | Body | GX5CrNiMo19-11-2, 1.4408 |
| 2 | Bonnet, cpl. * | |
| 2.1 | Actuator housing | GX5CrNiMo19-11-2, 1.4408 |
| 2.2 | Actuator cover | GX5CrNiMo19-11-2, 1.4408 |
| 2.3 | Plug | X6CrNiMoTi17-12-2, 1.4571 |
| 2.5 | Stem | X2CrNiMo17-12-2, 1.4404 |
| 2.6 | Hood | GX5CrNiMo19-11-2, 1.4408 |
| 2.7 | Piston | GX5CrNiMo19-11-2, 1.4408 |
| 2.8 | Bushing | PTFE |
| 2.9 | Guide bushing | PA66 GF |
| 2.10 | Spring | SH |
| 2.11 | Sight glass | PA transparent |
| 2.12 | V-ring unit | PTFE |
| 2.13 | Indication | PA66 |
| 2.14 | Washer | 1.4301 |
| 2.15 | Spring | X10CrNi18-8, 1.4310 |
| 2.16 | Sealing ring | NBR |
| 2.17 | Sealing ring | PTFE |
| 2.19 | Screw joint | X6CrNiMoTi17-12-2, 1.4571 |
| 2.24 | O-ring | NBR |
| 2.28 | Rod seal | FPM |
| 2.29 | Cylinder bushing | Stainless steel / PTFE |
| 2.32 | Hood extension | X2CrNiMo17-12-2, 1.4404 |
| 3 | Gasket * | PTFE / Graphite |

* Spare parts (Pos. 2.1 - 2.29 will be supplied as unit)

Information / restriction of technical rules need to be observed!

A production allowance acc. to TRB 801 No. 45 exists

The engineer, designing a system or a plant, is responsible for the selection of the correct valve.

Pneumatic process valve, Y-pattern for clamp connection and pneumatic actuator

| Figure | Nominal pressure | Material | Nominal diameter |
|--|------------------|----------|------------------|
| 52.350...a | PN16 | 1.4408 | DN15-50 |
| Standard: Klemmverbindung acc. to DIN 32676 (BS4825-3 on request) | | | |
| Stem sealing | | | |
| <ul style="list-style-type: none"> • PTFE-V-ring unit -10°C to 180°C (optional with hood extension to 184°C) | | | |
| Plug design | | | |
| <ul style="list-style-type: none"> • Isolation plug with PTFE-soft sealing | | | |
| Shut off class (Shut off classes) | | | |
| <ul style="list-style-type: none"> • Metal / PTFE - Leakage class A acc. to DIN EN 12266-1 • Metal / FPM - Leakage class A acc. to DIN EN 12266-1 (optional) | | | |
| Actuator material | | | |
| <ul style="list-style-type: none"> • 1.4408 (Max. permissible ambient temperature +60°C) | | | |

Selection of possible applications

Industrial installations, processing technology, plant manufacturing, etc. (other applications on request)

Selection of possible flow media

Cooling water, Warm water, Hot water, Steam, Oil, Air, Neutral gases, Alkalis, Alcohol, etc. (other flow media on request)

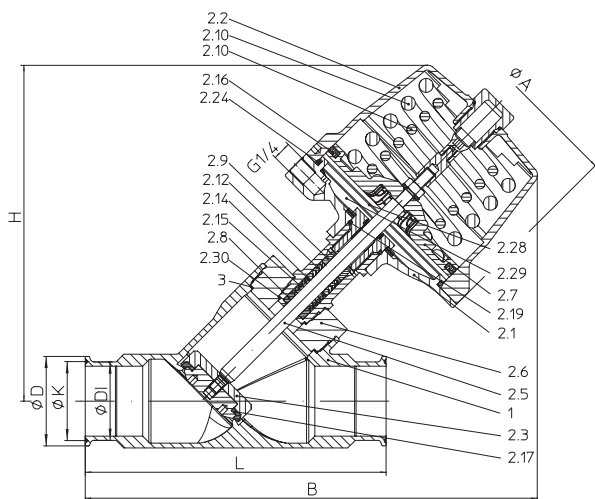


Fig. 350 Spring closes (NC)

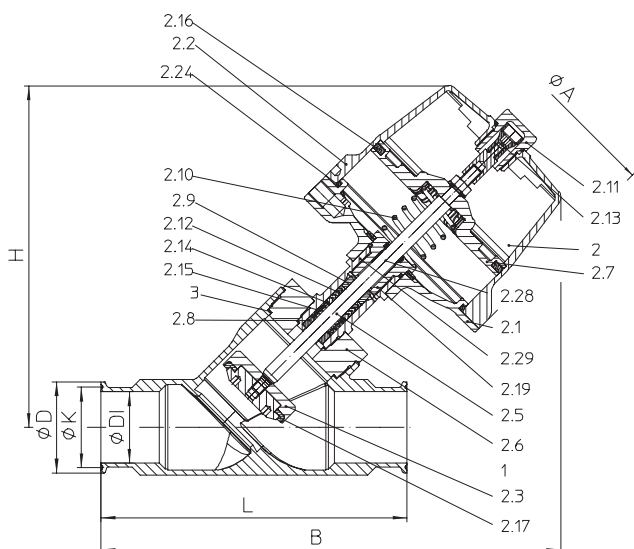


Fig. 350 Spring opens on air failure (optional) (NO)

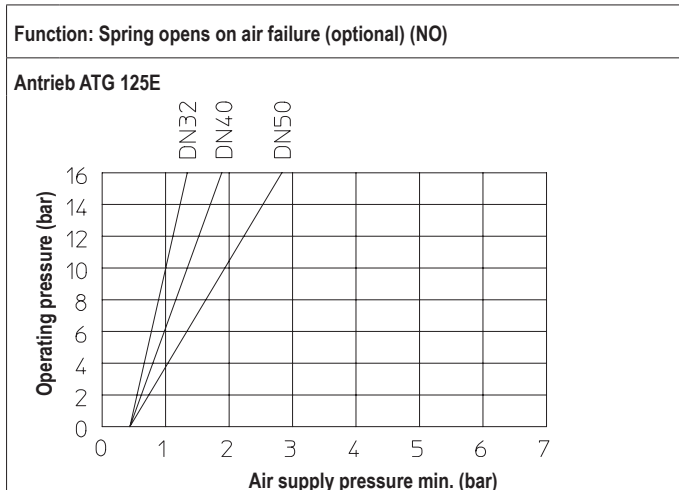
Dimensions and weights

| DN | | 15 | 20 | 25 | 32 | 40 | 50 | | | | |
|--|------------|----------------|---------|---------|---------|---------|----------------|---------|----------------|------|-----|
| Actuator | | ATG 50E | ATG 50E | ATG 50E | ATG 80E | ATG 80E | ATG 125E | ATG 80E | ATG 125E | | |
| H | (mm) | in preparation | | | | 223 | in preparation | 230 | in preparation | 240 | |
| B | (mm) | | | | | 301 | | 306 | | 322 | |
| ØA | (mm) | | | | | 152 | | 152 | | 152 | |
| Klemmverbindung acc. to DIN 32676 | L | | | | | (mm) | | 187 | | 201 | 215 |
| | ØD | | | | | (mm) | | 50,5 | | 50,5 | 64 |
| | K | (mm) | 43,5 | 43,5 | 56,5 | | | | | | |
| | ØDI | (mm) | 32 | 38 | 50 | | | | | | |
| Weight | (kg) | | | | | 7,2 | 7,5 | 8,5 | | | |

Face-to-face dimension FTF series 1 acc. to DIN EN 558

Air supply pressure (flow direction under the plug)

| Function: Spring closes on air failure (NC) | | | | | | | | | | | | | | | | | | | | |
|---|--------|---------|----|----|----|----|----|---------|---|----|----|---|----|----------|----------------|----------|-----|----------------|----------|-----|
| DN | | 15 | | | 20 | | | 25 | | | 32 | | | 40 | | | 50 | | | |
| Actuator | | ATG 50E | | | | | | ATG 80E | | | | | | ATG 125E | ATG 80E | ATG 125E | | ATG 80E | ATG 125E | |
| Operating pressure max. | (bar) | 6 | 10 | 16 | 6 | 10 | 16 | 6 | 6 | 10 | 16 | 6 | 10 | 16 | 6 | 10 | 16 | 4 | 6 | 10 |
| Kvs-value | (m³/h) | | | | | | | | | | | | | 25,8 | in preparation | 38,2 | | in preparation | 58,5 | |
| Travel | (mm) | | | | | | | | | | | | | 25 | | 25 | | | 25 | |
| Air supply pressure min. | (bar) | | | | | | | | | | | | | 2,8 | in preparation | 2,8 | 4,5 | in preparation | 2,8 | 4,3 |

Air supply pressure diagram (flow direction under the plug)

Parts

| Pos. | Description | Fig. 52.350....a |
|------|------------------|---------------------------|
| 1 | Body | GX5CrNiMo19-11-2, 1.4408 |
| 2 | Bonnet, cpl. * | |
| 2.1 | Actuator housing | GX5CrNiMo19-11-2, 1.4408 |
| 2.2 | Actuator cover | GX5CrNiMo19-11-2, 1.4408 |
| 2.3 | Plug | X6CrNiMoTi17-12-2, 1.4571 |
| 2.5 | Stem | X2CrNiMo17-12-2, 1.4404 |
| 2.6 | Hood | GX5CrNiMo19-11-2, 1.4408 |
| 2.7 | Piston | GX5CrNiMo19-11-2, 1.4408 |
| 2.8 | Bushing | PTFE |
| 2.9 | Guide bushing | PA66 GF |
| 2.10 | Spring | SH |
| 2.11 | Sight glass | PA transparent |
| 2.12 | V-ring unit | PTFE |
| 2.13 | Indication | PA66 |
| 2.14 | Washer | 1.4301 |
| 2.15 | Spring | X10CrNi18-8, 1.4310 |
| 2.16 | Sealing ring | NBR |
| 2.17 | Sealing ring | PTFE |
| 2.19 | Screw joint | X6CrNiMoTi17-12-2, 1.4571 |
| 2.24 | O-ring | NBR |
| 2.28 | Rod seal | FPM |
| 2.29 | Cylinder bushing | Stainless steel / PTFE |
| 3 | Gasket * | PTFE / Graphite |

* Spare parts (Pos. 2.1 - 2.29 werden als Baugruppe geliefert)

Information / restriction of technical rules need to be observed!

A production allowance acc. to TRB 801 No. 45 exists

The engineer, designing a system or a plant, is responsible for the selection of the correct valve.

| Productkey | Figure | Type | Material | Pressure | Connection | Nominal di... | p1-Max.[b... | kvs | Air supply pressur... | Actuator | Limit switch | Solenoid ... | Travel lim... | Speed[m/s] |
|------------|---------|------------|----------|----------|-------------|---------------|--------------|-----|-----------------------|----------|---------------|--------------|---------------|------------|
| 2910190... | 52350-1 | ARI-STE... | 1.4408 | PN 16 | flanged | DN 50 | | 6 | 54.3 | 7 ATG80 | no | no | none | 3.54 |
| 2910190... | 52350-2 | ARI-STE... | 1.4408 | PN 16 | screwed ... | Rp/BSP 2 | | 6 | 54.3 | 7 ATG80 | no | no | none | 3.54 |
| 2910190... | 52350-4 | ARI-STE... | 1.4408 | PN 16 | butt wel... | DN 50 / IS... | | 6 | 54.3 | 7 ATG80 | no | no | none | 3.54 |
| 2910190... | 52350-4 | ARI-STE... | 1.4408 | PN 16 | butt wel... | DN 50 / DI... | | 6 | 54.3 | 7 ATG80 | Limit swit... | 5/2-way ... | none | 3.54 |
| 2910190... | 52350-4 | ARI-STE... | 1.4408 | PN 16 | butt wel... | DN 50 / DI... | | 6 | 54.3 | 7 ATG80 | Limit swit... | 3/2-way ... | none | 3.54 |

MyValve - Calculator
Contents:
Module ARI-Process valves STEVI-AS-Calculation

- Sizing (calculation of valve-size with given temperature, flow, and operating pressure)

Media:
Integrated media-databank (more than 160 media) with conditions:

- Vapours / gases
- Steam (saturated and superheated)
- Liquids

Special features:

- Project administration of the calculation and product data incl. spare part drawings concerning to project and tag number
- Direct output or calculation and product data in PDF format
- Product data could be taken for a direct order
- SI- and ANSI-units with direct conversion to another databank
- Settings with over pressure or absolute pressure
- All ARI **Process** valves are integrated in a databank
- Direct access concerning to the product on data sheets, operating instructions, pressure-temperature-diagram and spare part drawings
- Operation in company networks possible (no complex installations on individually PC's necessary)

System Requirements:

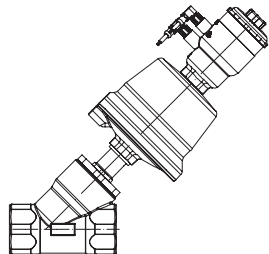
Windows operating systems, Linux, etc.

Pressure-temperature-ratings acc. to DIN EN 1092-1

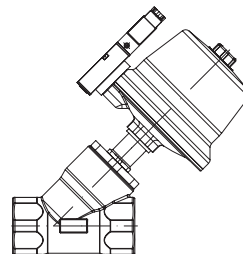
| Material | | | -60°C to <-10°C | -10°C to 100°C | 150°C | 180°C |
|----------|------|-------|-----------------|----------------|-------|-------|
| 1.4408 | PN16 | (bar) | 16 | 16 | 14,5 | 13,1 |

Intermediate values for max. permissible operational pressures can be determined by linear interpolation of the given temperature / pressure chart.

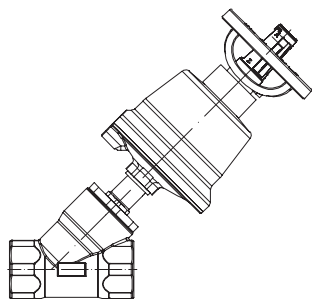
Options



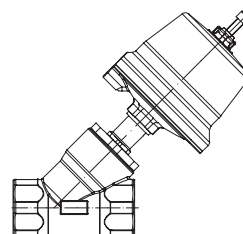
Limit switch, mechanical or inductive operated



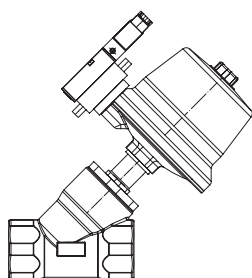
3/2-way NAMUR-solenoid valves
(incl. adapter plate)



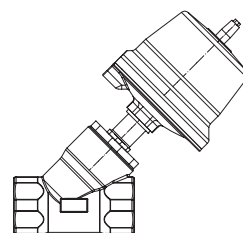
Handwheel
(Function: Spring closes on air failure (NC),
flow direction under the plug)



Travel limiter



3/2-way NAMUR-solenoid valves
with speed regulating plate



Sound absorber

Please indicate when ordering

- Figure-No.
- Nominal diameter
- Nominal pressure
- Body material
- Plug design
- Stem sealing
- Actuator
- Special design / accessories

Please indicate in your order, if
the valves are to be installed in
hazardous areas (ATEX).

Example:

Figure 52.350; Nominal diameter DN50; Nominal pressure PN16; Body material 1.4408; Isolation plug;
Stem sealing PTFE-V-ring unit; pneumatic actuator ATG125E.

Dimensions in mm
Weights in kg
Pressures in barg (gauge)
1 bar \triangleq 10⁵ Pa \triangleq 0,1 MPa
Kvs in m³/h



Technology for the Future.
GERMAN QUALITY VALVES

ARI-Armaturen Albert Richter GmbH & Co. KG, D-33756 Schloß Holte-Stukenbrock,
Tel. +49 52 07 / 994-0, Telefax +49 52 07 / 994-158 or 159 Internet: <http://www.ari-armaturen.com> E-mail: info.vertrieb@ari-armaturen.com